



Sutran[®]

CASTOR & WHEELS

..... Engineered to Precision



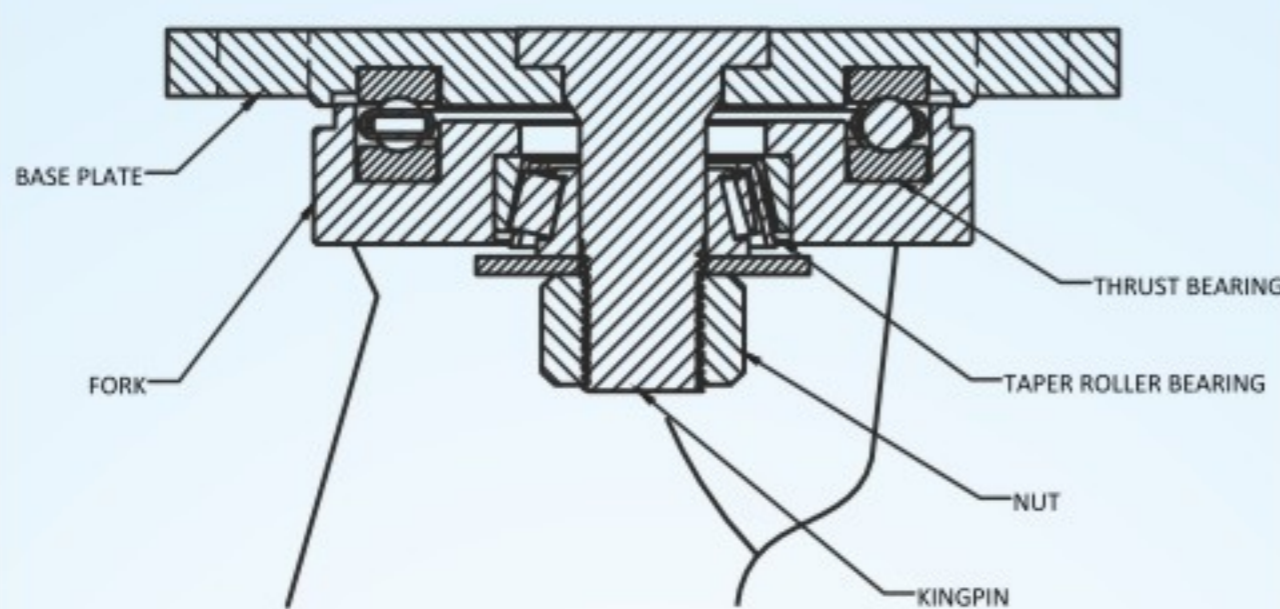
..... Technically Ahead

'SUTRAN' brings to you the most comprehensive range of HEAVY DUTY CASTORS, POLYURETHANE WHEELS, UNBREAKABLE PPCP Wheels and assemblies.

'SUTRAN' has gained recognition as the manufacturers of high quality products which are a result of a two decades of association with the material handling departments of diverse industries. Our commitment to deliver the best materials at the most cost-effective prices coupled with an ever responsive and interactive techno-commercial back up has ensured total customer satisfaction over the years.

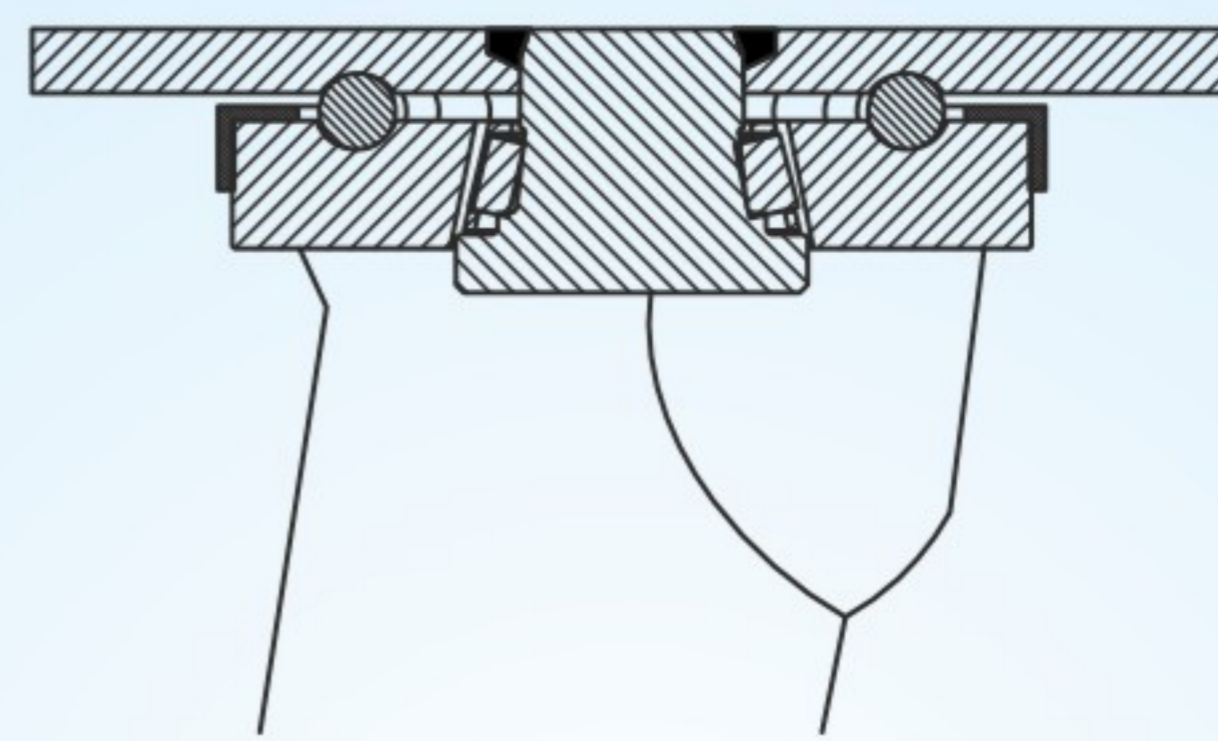
'SUTRAN' Castor Wheel assemblies are designed for moving critical loads in the smoothest possible manner for very long service life under arduous conditions for any conceivable type of application. Our Castor Wheels are designed for running safety, better contact area, low heat build up, low abrasion losses & low maintenance costs in mind. Truly - *More value for your money.*

SUTRAN (SFB2)



Super Quality with Thrust / Taper Bearing

SUTRAN (TTP)



Fabricated Thrust Ball Race / Taper Pin

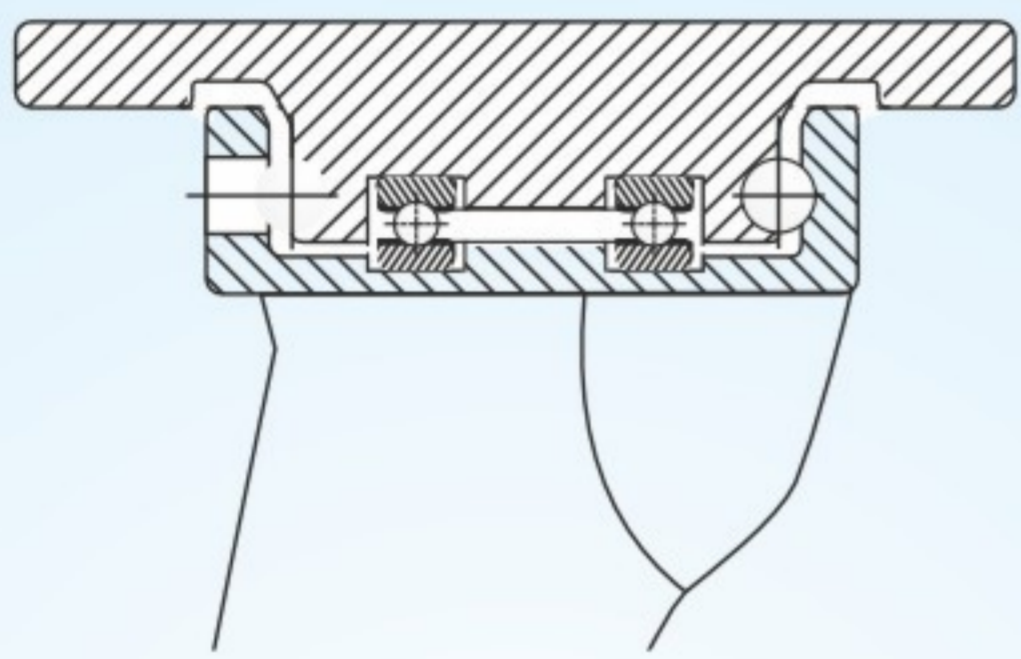


Our new range of **SUTRAN Spinfine forged steel castors** with thrust bearing is a product of revolutionary concept of heavy duty castor wheel assembly. It has been designed for moving critical loads, in the smoothest possible manner, for very long service life under tough conditions, for any conceivable type of application.

SUTRAN Spinfine forged steel castors are made from heavy steel forging and is a vast improvement over conventional forge steel castors. The design has the Base and Swivel assembly interlocked by a precision machined ball race and an additional thrust bearing is provided to uniformly divide the thrust load eliminating over stressing of the interlocking ball race, resulting in a higher load carrying capacity, improvement in the swivel action and increasing the service life of Castor.

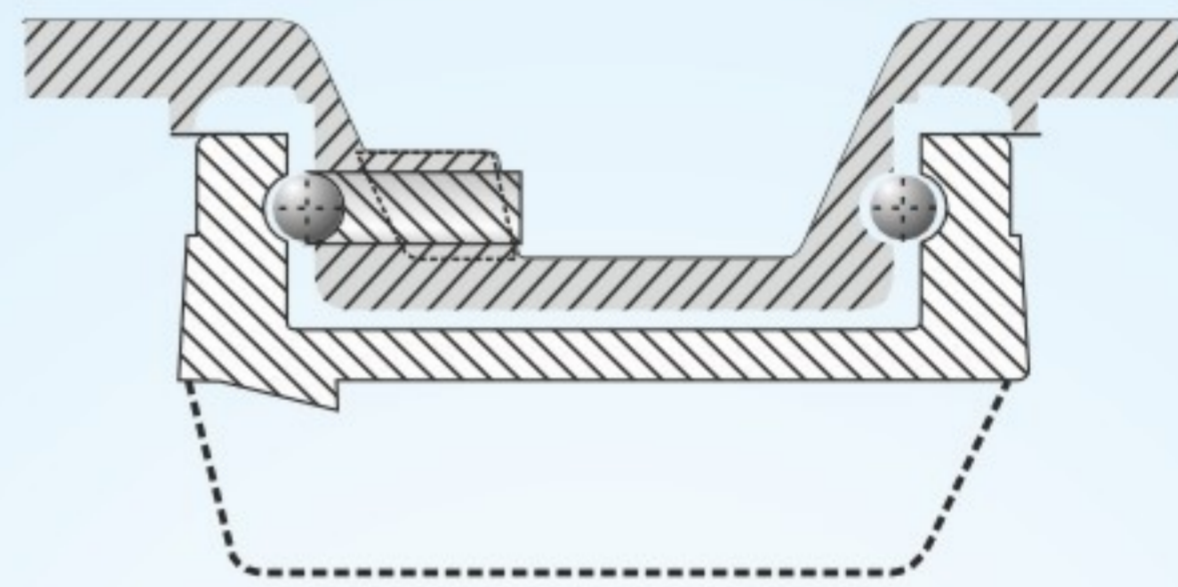
The thrust bearing and steel balls are fully enclosed in a grease bath having retaining seals and nipple, therefore the castor requires negligible maintenance, *Giving more value for your money.*

Spinfine (SF2)



with Thrust Bearing

Forged Steel (SFC)



Conventional Type



Fixed Castor



SF2 Swivel



SFC Swivel (Brake)



**UHM Wheel
(SFB3)**

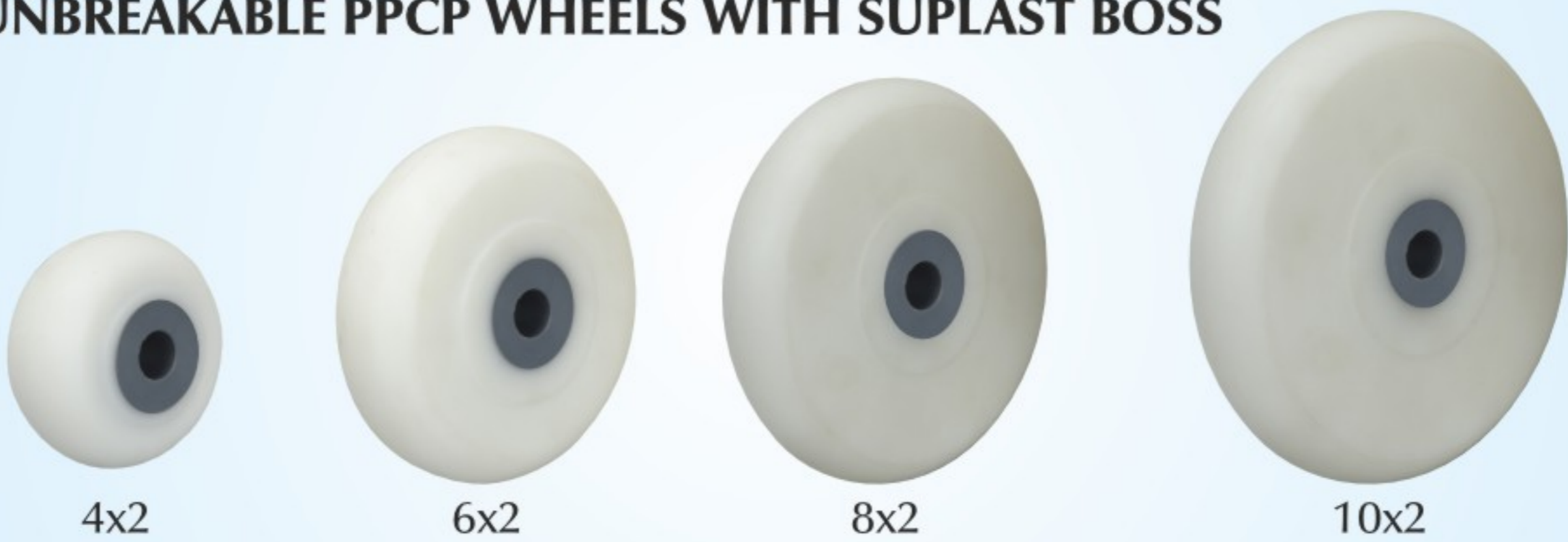


**PPCP Wheel
(SFB2)**



**Polyamide on CI
Hub Wheel (SFB2)**

UNBREAKABLE PPCP WHEELS WITH SUPLAST BOSS



4x2

6x2

8x2

10x2



Flange Type



UHM on CI



PU on CI



RBCI



RBCI Solid



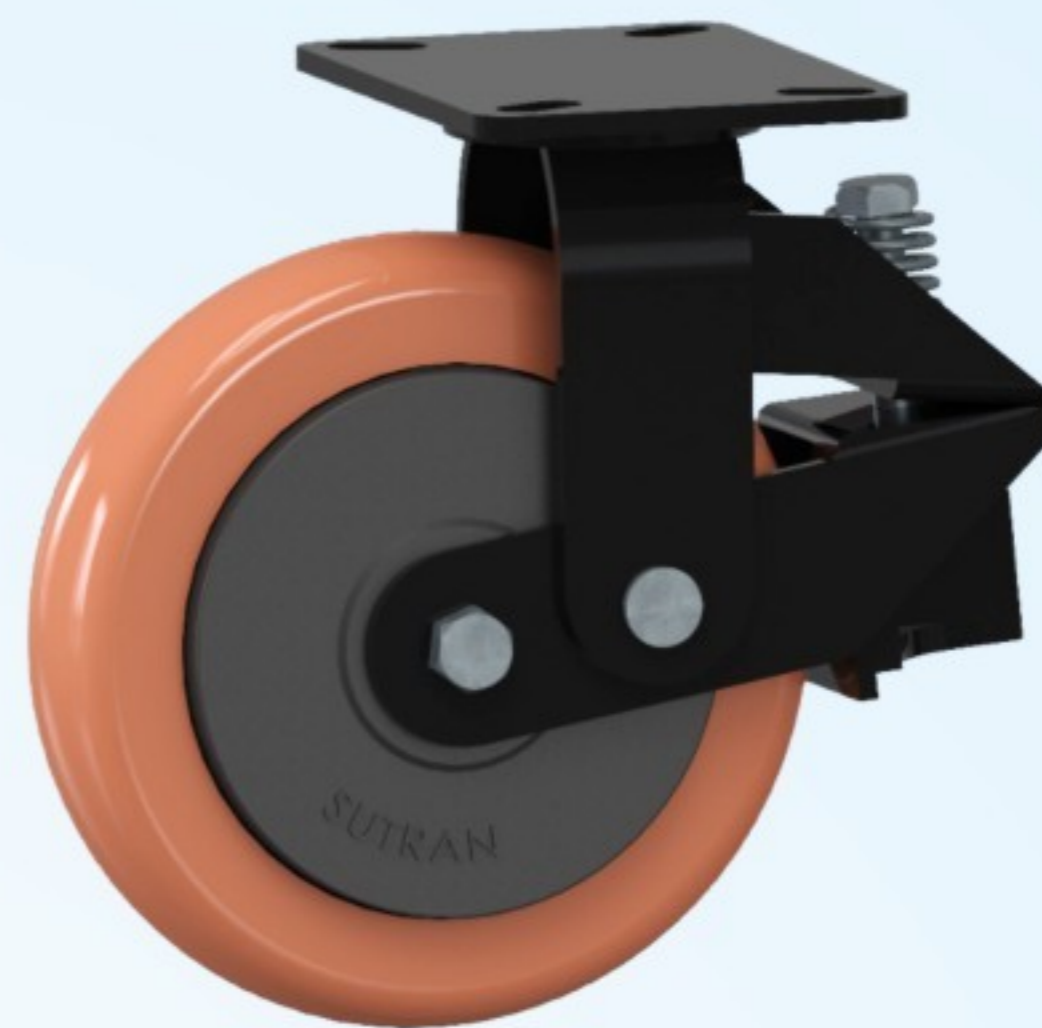
RBCI Rib Type



SHOCK ABSORBER
(5 SPRINGS)
SF2 FIXED CASTOR



SHOCK ABSORBER
(5 SPRINGS)
SF2 SWIVEL CASTOR



SHOCK ABSORBER
(1 SPRING)
SF2 CASTOR



100 X 32 WINDING AND
DOFFING TROLLEY



SINGLE ARM
SWIVEL



SINGLE ARM
FIXED



HEAVY DUTY LOW HEIGHT
CASTOR WHEEL



DUAL WHEEL ON TAPER
ROLLER BEARING CONSTRUCTION



SKID TYPE CASTOR

SPINNING CANS CASTORS



NW
Nylon White (T2 60 mm)



PPR
PPCP "Red" (T2TRP 60 mm)



PPCP
PPCP (T3SP 80 mm)



PU
PU (T3SP 80 mm)

GENERAL PURPOSE CASTOR WHEELS

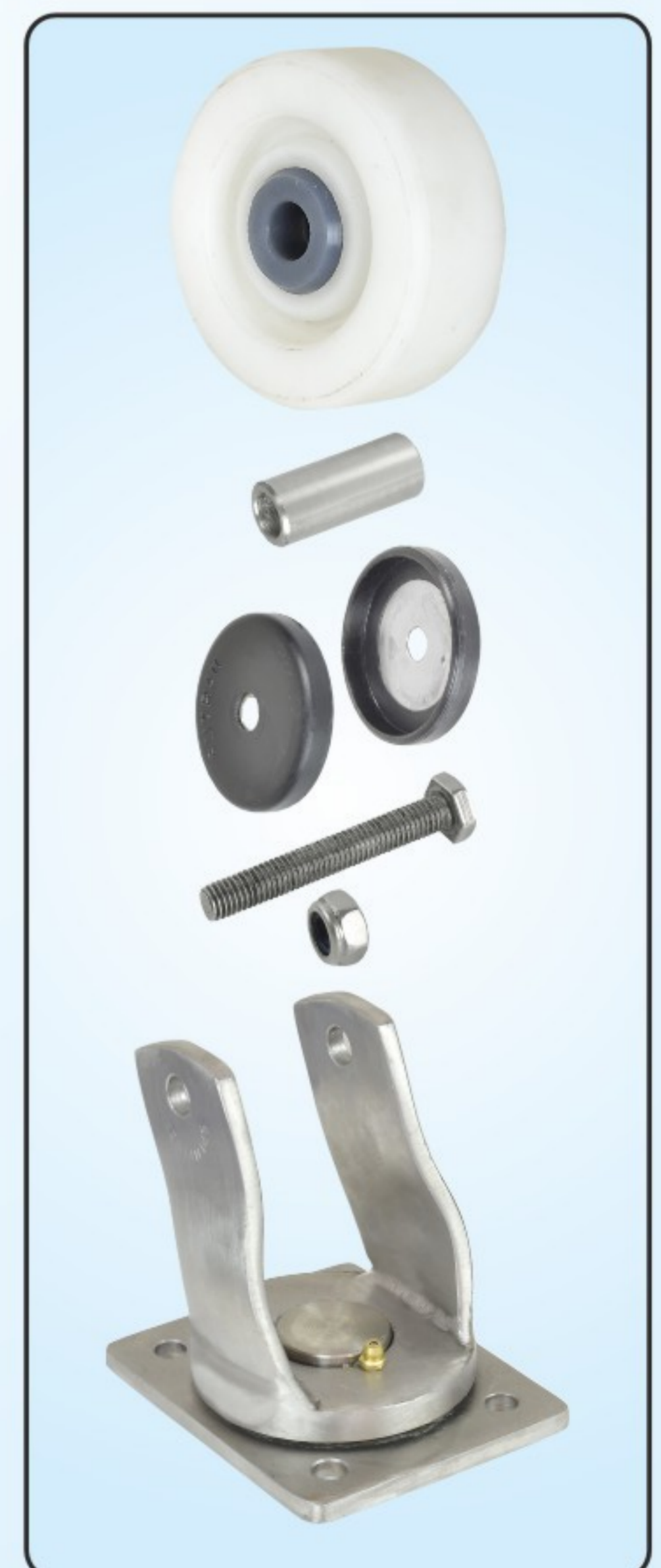


YARN CONDITIONING SS CASTOR WHEELS



SALIENT FEATURES :

- Sturdy construction for heavy loads ensuring excellent Impact & Shock resistance.
- Wheels manufactured out of Polypropylene unbreakable impact co-polymer material impregnated with SUPLAST self lubricating, low coefficient of friction, wear resistant, slide bearing Boss, with SS solid Bush, SS Nylock Nut Bolt and Thread Guard Excellent Wear resistance.
- Provision of Grease Nipple for periodic greasing, Enhancing the Castor life.
- Minimum pushing force required thus Enhancing higher loads per man per hour.



PPWS (Brg Housing)



PPCP WHITE
WITH BEARING HOUSING

PPWS



PPCP WHITE
SOLID

PPWS (SB)



PPCP WITH
SUPLAST BOSS

PPWS (CIH)



PPCP WHITE SOLID
ON CAST IRON HUB

PUAL



POLY URETHANE
ON ALUMINIUM HUB

PUPH



POLY URETHANE
ON POLYMER HUB

PUCI



POLY URETHANE
ON CAST IRON HUB

PUCI (H)



POLY URETHANE ON
HEAVYDUTY CAST IRON HUB

PAPH



POLYAMIDE ON
POLYMER HUB

PACI



POLYAMIDE ON
CAST IRON HUB

SS ROLLER



STAINLESS STEEL
ROLLER

PLATFORM WHEEL



ALUMINIUM ROLLER
WHEEL (YCP)

RBCI



HEAVY DUTY RUBBER
BONDED WHEEL

PC (ADOPTER)



UHM POLYMER COMM
WITH ADOPTER ATTACHMENT

PC (FLANGE)



UHM POLYMER COMM WITH
FLANGE COUPLING ATTACHMENT

PC (COUPLING)



UHM POLYMER COMM
WITH COUPLING

HPT (FRONT)



PALLET NYLON
WHEELS

HPT (BACK)



PALLET NYLON
WHEELS

HPT (PUCI)



POLYURETHANE
PALLET WHEEL

CI



CAST IRON

OUR VALUABLE CUSTOMERS



SUTRAN CONVEYORS PVT LTD

Airport Gate 1, TMC Office Lane,
Near Kamlapur Post Office,
Moti Lal Colony, Kolkata-700028
Mobile : +91-98887-53533, 93167-53532
Email : sutranconveyors.sales@gmail.com

SUTRAN POLYMERS PVT LTD

GURGAON :

Khasra No. 601/3/31, Khandsa Road,
Gurgaon-122001, Haryana
Tel : +91-124-2970230
Mobile : +91-93165-53537, 98887-53538
Email : sutranpolymers.ncr@gmail.com

LUDHIANA :

B-XXI-3080, Street No.12, New Janta Nagar,
Ludhiana, Punjab-141003
Mobile : +91-93167-53531, 93165-53537
Email : sutranpolymers.ldh@gmail.com



www.sutranindia.com

SUTRAN CONVEYORS PVT LTD SAI KRISHNA INDUSTRIES TECHNO CONVEYOR INDUSTRIES

Sua Road, Industrial Area- C, Near Eastman Chowk
Opp. Ashirwad Dharam Kanda, Dhandari Kalan
Ludhiana - 141010 (Pb.) INDIA
Tel.: +91-161-5034059
Mobile : 98887-53533
Email : sutrantchnoconveyors@gmail.com

Authorised Dealer :

All images and matter are covered under copyright act.

Infra Graphics : 098145-05954