



Sutran[®]

CASTOR & WHEELS

..... Engineered to Precision



..... Technically Ahead

'SUTRAN' brings to you the most comprehensive range of HEAVY DUTY CASTORS, POLYURETHENE WHEELS, UNBREAKABLE PPCP Wheels and assemblies.

'SUTRAN' has gained recognition as the manufacturers of high quality products which are a result of a two decades of association with the material handling departments of diverse industries. Our commitment to deliver the best materials at the most cost-effective prices coupled with an ever responsive and interactive techno-commercial back up has ensured total customer satisfaction over the years.

'SUTRAN' Castor Wheel assemblies are designed for moving critical loads in the smoothest possible manner for very long service life under arduous conditions for any conceivable type of application. Our Castor Wheels are designed for running safety, better contact area, low heat build up, low abrasion losses & low maintenance costs in mind. Truly - *More value for your money.*

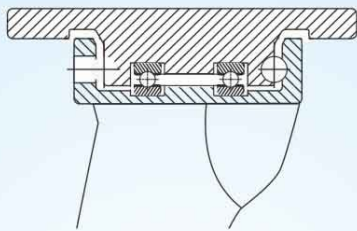


Our new range of **SUTRAN Spinfine forged steel castors** with thrust bearing is a product of revolutionary concept of heavy duty castor wheel assembly. It has been designed for moving critical loads, in the smoothest possible manner, for very long service life under tough conditions, for any conceivable type of application.

SUTRAN Spinfine forged steel castors are made from heavy steel forging and is a vast improvement over conventional forge steel castors. The design has the Base and Swivel assembly interlocked by a precision machined ball race and an additional thrust bearing is provided to uniformly divide the thrust load eliminating over stressing of the interlocking ball race, resulting in a higher load carrying capacity, improvement in the swivel action and increasing the service life of Castor.

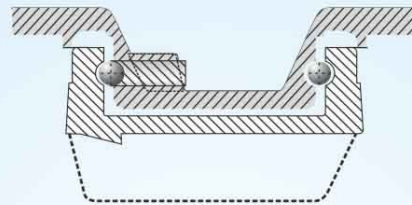
The thrust bearing and steel balls are fully enclosed in a grease bath having retaining seals and nipple, therefore the castor requires negligible maintenance, *Giving more value for your money.*

Spinfine (SF2)



with Thrust Bearing

Forged Steel (SFC)



Conventional Type



Fixed Castor



SF2 Swivel



SFC Swivel (Brake)



**A Frame Trolley Wheel
(SFB3)**



**Batch Trolley Wheel
(SFB2)**

UNBREAKABLE PPCP WHEELS WITH SUPLAST BOSS



4x2



6x2



8x2



10x2



Flange Type



UHM on CI



PU on CI



RBCI



RBCI Solid



RBCI Rib Type



SFB2 with ETG



100 X 32
WINDING AND
DOFFING TROLLEY



HEAVY DUTY
LOW HEIGHT
CASTOR WHEEL



SINGLE ARM
SWIVEL



SINGLE ARM
FIXED



Dual Wheel on Taper
Roller Bearing Construction



Spinline Swivel Castor
with "Shock Absorber"



Spinline Fixed Castor
with "Shock Absorber"



SKID TYPE CASTOR

SPINNING CANS CASTORS



NW
Nylon White (T2 60 mm)



PPR
PPCP "Red" (T2TRP 60 mm)



PPCP
PPCP (T3SP 80 mm)



PU
PU (T3SP 80 mm)

GENERAL PURPOSE CASTOR WHEELS



YARN CONDITIONING SS CASTOR WHEELS



SALIENT FEATURES :

- Sturdy construction for heavy loads ensuring excellent Impact & Shock resistance.
- Wheels manufactured out of Polypropylene unbreakable impact co-polymer material impregnated with SUPLAST self lubricating, low coefficient of friction, wear resistant, slide bearing Boss, with SS solid Bush, SS Nylock Nut Bolt and Thread Guard Excellent Wear resistance.
- Provision of Grease Nipple for periodic greasing, Enhancing the Castor life.
- Minimum pushing force required thus Enhancing higher loads per man per hour.



PPWS (Brg Housing)



PPCP WHITE
WITH BEARING HOUSING

PPWS



PPCP WHITE
SOLID

PPWS (SB)



PPCP WITH
SUPLAST BOSS

PPWS (CIH)



PPCP WHITE SOLID
ON CAST IRON HUB

PUAL



POLY URETHANE
ON ALUMINIUM HUB

PUPH



POLY URETHANE
ON POLYMER HUB

PUCI



POLY URETHANE
ON CAST IRON HUB

PUCI (H)



POLY URETHANE ON
HEAVYDUTY CAST IRON HUB

PLATFORM WHEEL



ALUMINIUM ROLLER
WHEEL (YCP)

SS ROLLER



STAINLESS STEEL
ROLLER

CI



CAST IRON

RBCI



HEAVY DUTY RUBBER
BONDED WHEEL

ORANGE UHM



ORANGE UHM
UNBREAKABLE WHEEL

PC (ADOPTER)



UHM POLYMER COMM
WITH ADOPTER ATTACHMENT

PC (FLANGE)



UHM POLYMER COMM WITH
FLANGE COUPLING ATTACHMENT

PC (COUPLING)



UHM POLYMER COMM
WITH COUPLING

HPT (FRONT)



PALLET NYLON
WHEELS

HPT (BACK)



PALLET NYLON
WHEELS

HPTPU



PU PALLET
WHEELS

HPT (PUCI)



POLYURETHANE
PALLET WHEEL

OUR VALUABLE CUSTOMERS



SUTRAN ENTERPRISES

P-35, Kalindi Housing Estate, Kolkata-700089
Email : sutranenterprises.kol@gmail.com
Mobile : +91-98302-17299, 93167-53532

SUTRAN POLYMERS PVT LTD

GURGAON :
2430/3, Near Tata Motor G.N.G Showroom,
Old Delhi Road Gurgaon, Gurgaon, Haryana-122001
Email : sutranpolymers.ncr@gmail.com
Tel : +91-124-2970230 Mobile : 93165-53537

LUDHIANA :
B-XXI-3080, Street No.12, New Janta Nagar,
Ludhiana, Punjab-141003
Email : sutranpolymers.ldh@gmail.com
Mobile : +91-93167-53531, 93165-53537



www.sutranindia.com

SUTRAN CONVEYOR PVT LTD SAI KRISHNA INDUSTRIES TECHNO CONVEYOR INDUSTRIES

Sua Road, Industrial Area- C, Near Eastman Chowk
Opp. Ashirwad Dharam Kanda, Dhandari Kalan
Ludhiana - 141010 (Pb.) INDIA
Tel.: +91-161-5034059 Mobile : 98887-53533
Email : sutranttechnoconveyors@gmail.com

Authorised Dealer :

All images and matter are covered under copyright act.

Infra Graphics : 098145-05954